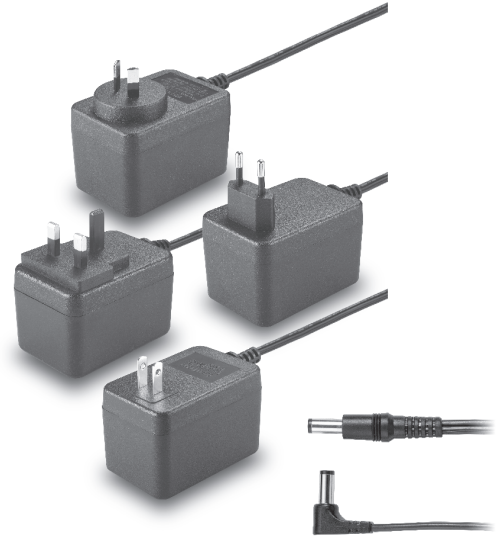


# TRG25

S E R I E S

## 25W SWITCHING ADAPTER



### Features

- Universal Input Range 100-240VAC
- Meets EN55022 Class B and CISPR/FCC Class B, Conducted
- Continuous Short Circuit Protection
- Over Voltage Protection (Option)
- CEC Level IV Compliant (Output Cable Length  $\leq$  1800mm)  
**(TRG25033: Output Cable Length  $\leq$  720mm)**  
**(TRG25050: Output Cable Length  $\leq$  1200mm)**

### Ordering information

TRG25XXX	- X	- XX	X	XX
Model No.	AC Plug Type	DC Plug Type	OVP	DC Cable Length and Type
	A : USA 2 Pin E : Europe 2 Pin U : British 3 Pin S : Australia 2 Pin	* Please see Page235 for more detailed descriptions	E : With OVP	01 : 720mm 02 : 1200mm 03 : 1800mm 11 : 720mm with Ferrite Core 12 : 1200mm with Ferrite Core 13 : 1800mm with Ferrite Core * 18AWG / SPT1

MODEL	OUTPUT VOLTAGE	MAX. LOAD	MIN. LOAD	RIPPLE & NOISE	VOLTAGE ACCURACY	LINE REGULATION	LOAD REGULATION	SWITCHING FREQUENCY	%EFF
TRG25033	3.3V	4.0A	0 A	50m Vp-p	$\pm$ 2%	$\pm$ 1%	$\pm$ 6%	65KHz Typ.	72% Typ.
TRG25050	5V	4.0A	0 A	1%	$\pm$ 2%	$\pm$ 1%	$\pm$ 6%	65KHz Typ.	75% Typ.
TRG250120	12V	2.1A	0 A	1%	$\pm$ 2%	$\pm$ 1%	$\pm$ 5%	65KHz Typ.	81% Typ.
TRG250150	15V	1.67A	0 A	1%	$\pm$ 2%	$\pm$ 1%	$\pm$ 3%	65KHz Typ.	82% Typ.
TRG250180	18V	1.4A	0 A	1%	$\pm$ 2%	$\pm$ 1%	$\pm$ 2%	65KHz Typ.	82% Typ.
TRG250240	24V	1.05A	0 A	1%	$\pm$ 2%	$\pm$ 1%	$\pm$ 2%	65KHz Typ.	84% Typ.

## Specifications

### INPUT SPECIFICATIONS:

Voltage .....90 ~ 264Vac  
 Frequency .....47 to 63Hz  
 Input Current .....0.7A max.  
 Inrush Current.....50A max. @240Vac  
 Conducted EMI.....CISPR/FCC Class B  
 Isolation .....Input to output =4,242VDC  
 Leakage Current.....0.25mA max

### OUTPUT SPECIFICATIONS:

Holdup Time .....10ms typ. @115Vac  
 Short Circuit Protection .....Continuous (Auto Recovery)  
 Over Voltage Protection .....Yes

### ENVIRONMENTAL CHARACTERISTICS:

Operating Temperature .....0 ~ 40°C  
 Storage Temperature .....-20 ~ 85°C  
 Cooling.....Natural Convection

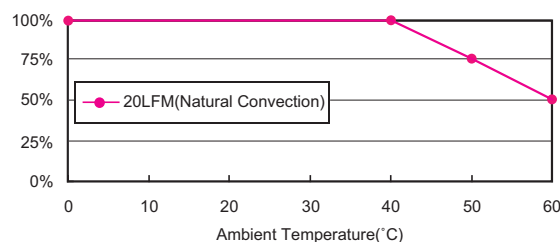
### MECHANICAL CHARACTERISTICS:

Dimensions .....80.50 x 49.06 x 56.00mm(3.169 x 1.932 x 2.205Inches)  
 Weight .....280g (0.62 Pounds)

### NOTE:

1. Voltage setpoint at 60% full load.
2. Add a 0.1µF ceramic capacitor and a 10µF E.L. capacitor to output for Ripple & Noise measurement @20MHz BW.
3. Line regulation measured from 100Vac to 240Vac with full load.
4. Load regulation measured from 60% to 100% full load and from 60% to 20% full load (60% +/- 40% full load)

## TRG25 Series Derating Curve



## Mechanical Specification

All Dimensions In Inches(mm)  
 Tolerance Inches: x.xxx= ±0.02  
 Millimeters: x.xx= ±0.5

FIG.A

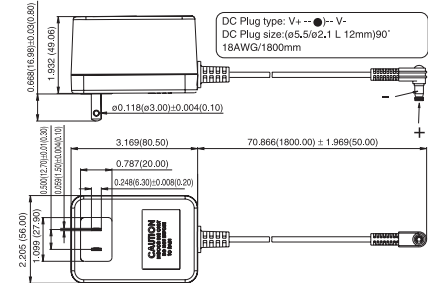


FIG.S

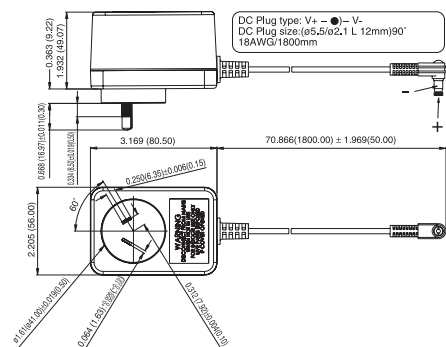


FIG.U

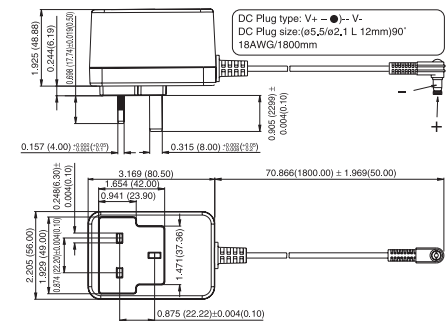


FIG.J

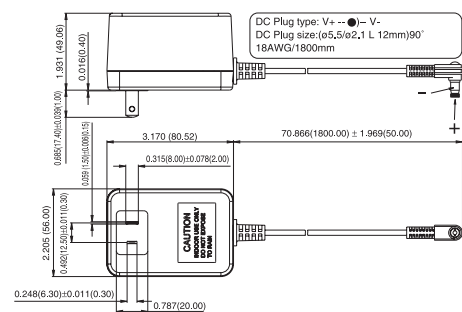


FIG.E

