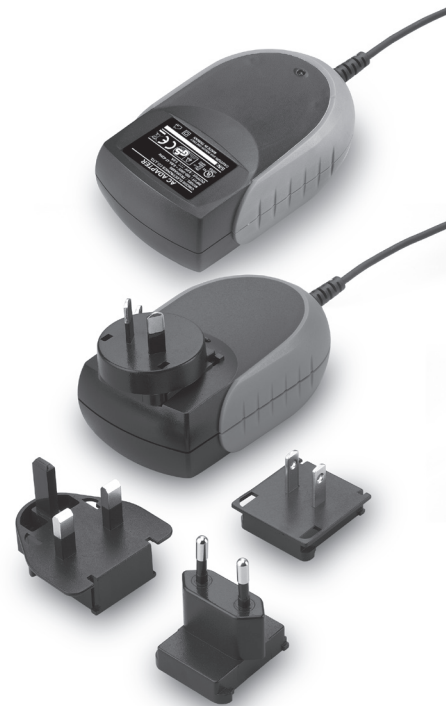


Description:

- Universal Input : 90 ~ 264Vac
- Continuous Short Circuit Protection
- Over Voltage Protection
- Conductive EMI Meets CISPR/FCC Class B
- High Efficiency, 75% Typical
- AC Plug Can Be Change
- Meet EN60601-1 and EN55011 Class B



MODEL	OUTPUT VOLTAGE	MAX. LOAD	MIN. LOAD	RIPPLE & NOISE	VOLTAGE ACCURACY	LINE REGULATION	LOAD REGULATION
TR3ORAM050	5.0 V	4.0A	0 A	1%	±2%	± 1%	± 6%
TR3ORAM090	9.0 V	3.0A	0 A	1%	±2%	± 1%	± 3%
TR3ORAM120	12 V	2.5A	0 A	1%	±2%	± 1%	± 2%
TR3ORAM150	15 V	2.0A	0 A	1%	±2%	± 1%	± 2%
TR3ORAM180	18 V	1.65A	0 A	1%	±2%	± 1%	± 2%
TR3ORAM240	24 V	1.25A	0 A	1%	±2%	± 1%	± 2%

NOTE:

1. Voltage setpoint at 60% load.
2. Add a 0.1uF ceramic capacitor and a 10uF E.L. capacitor to output for Ripple & Noise measuring @20MHz BW.
3. Line regulation measured from 100Vac to 240Vac , full load.
4. Load regulation measured from 60% to full load and from 60% to 20% load(60% +/- 40% load)

INPUT CHARACTERISTICS:

Voltage 90 ~ 264Vac
 Frequency 47 to 63Hz
 Inrush Current 50A max @264Vac
 Input Current 0.4~0.8A
 Conducted EMI CISPR/FCC Class B
 Isolation Input to output =5.656VDC
 Leakage Current..... 100µA max

OUTPUT CHARACTERISTICS:

Hold-up Time 10ms typ. @ 115Vac
 Short Circuit Protection Continuous (Auto Recovery)
 Over Voltage Protection Yes

ENVIRONMENTAL CHARACTERISTICS:

Operating Temperature 0 ~ 40°C
 Storage Temperature -20 ~ 85°C

MECHANICAL CHARACTERISTICS:

Dimensions 108.7x62x36.7mm (4.28x 2.44 x 1.44 Inches)
 Weight 300g

Typical at 25°C, nominal line and 75% load, unless otherwise Specified

