

CHB150W

S E R I E S

NEW



**99 TO 150 WATT
4:1 INPUT RANGE
DC-DC CONVERTERS**



Features

- 99-150W Isolated Output
- 4 : 1 Input Wide Range
- Half-Brick Package
- Efficiency to 90%
- Regulated Outputs
- Remote ON/OFF
- OTP/OVP/OCV
- Continuous Short Circuit Protection

MODEL NUMBER	INPUT VOLTAGE	OUTPUT VOLTAGE	OUTPUT CURRENT		INPUT CURRENT		% EFF.	SIZE
			MIN.	MAX.	NO LOAD	FULL LOAD		
CHB150W-24S3V3	9-36 VDC	3.3VDC	0mA	30 A	200mA	4741mA	85	Half-Brick
CHB150W-24S05	9-36 VDC	5.0VDC	0mA	30 A	200mA	7022mA	87	Half-Brick
CHB150W-24S12	9-36 VDC	12 VDC	0mA	12.5 A	100mA	6944mA	88	Half-Brick
CHB150W-24S15	9-36 VDC	15 VDC	0mA	10 A	100mA	6944mA	88	Half-Brick
CHB150W-24S24	9-36 VDC	24 VDC	0mA	6.5 A	100mA	7022mA	88	Half-Brick
CHB150W-48S3V3	18-75VDC	3.3VDC	0mA	30 A	100mA	2371mA	87	Half-Brick
CHB150W-48S05	18-75VDC	5.0VDC	0mA	30 A	100mA	3511mA	89	Half-Brick
CHB150W-48S12	18-75VDC	12 VDC	0mA	12.5 A	50mA	3472mA	90	Half-Brick
CHB150W-48S15	18-75VDC	15 VDC	0mA	10 A	50mA	3472mA	90	Half-Brick
CHB150W-48S24	18-75VDC	24 VDC	0mA	6.5 A	50mA	3511mA	89	Half-Brick

NOTE : 1. Nominal Input Voltage 24, 48 VDC

Specifications

INPUT SPECIFICATIONS:

Input Voltage Range.....	24V.....	9-36V
	48V.....	18-75V
Undervoltage lockout	24Vin power up.....	8.8V
	24Vin power down	8.0V
	48Vin power up.....	17V
	48Vin power down	16V
Positive Logic Remote ON/OFF ^{1,3}		
Input Filter		PI Type

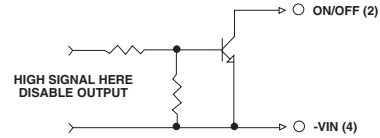
OUTPUT SPECIFICATIONS:

Voltage Accuracy :	±1.5% max.
Transient Response :25% Step Load Change.....	<500µ sec.
External Trim Adj. Range	±10%
Ripple & Noise, 20MHz BW	
3.3V & 5V	40mV RMS, max.
	100mV pk-pk, max.
12V & 15V	60mV RMS, max.
	150mV pk-pk, max.
24V	100mV RMS, max.
	240mV pk-pk, max.
Temperature Coefficient.....	±0.03%/°C
Short Circuit Protection.....	Continuous
Line Regulation ¹	±0.2% max.
Load Regulation ²	±0.2% max.
Over Voltage Protection trip Range, % Vo nom.....	115-140%
Current Limit	110% ~140% Nominal Output

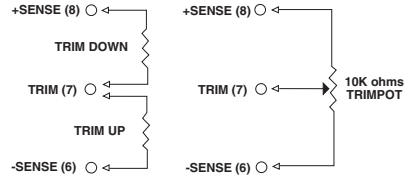
GENERAL SPECIFICATIONS:

Efficiency.....	See Table
Isolation Voltage	Input/Output..... 1500VDC min.
	Input/Case..... 1500VDC min.
	Output/Case..... 1500VDC min.
Isolation Resistance	10 ⁷ ohm min.
Switching Frequency	250KHz, Typ.
Operating Case Temperature	-40°C to 100°C
Storage Temperature	-55°C to +105°C
Thermal Shutdown, Case Temp.	110°C Typ.
Dimensions	2.28x2.40x0.52 inches (57.9x61.0x13.2 mm)
Case Material.....	Aluminum Base Plate with Pastic Case

Remote On/Off Control



External Output Trim



PIN CONNECTION

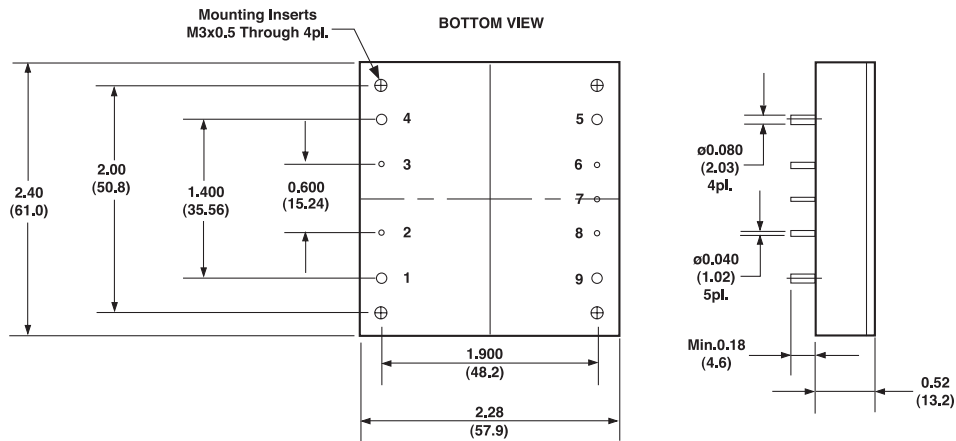
Pin	Function
1	+V Input
2	ON/OFF
3	CASE
4	-V Input
5	-V Output
6	-Sense
7	Trim
8	+Sense
9	+Vout

NOTE:

- Measured From High Line to Low Line
- Measured From Full Load to Zero Load
- Output Ripple and Noise measured with 10µF tantalum and 1µF Ceramic capacitor across output
- Logic Compatibility Open Collector ref to -Input
Module ON > 3.5Vdc or Open Circuit
Module OFF < 1.8Vdc
- Suffix "N" to the Model Number with Negative Logic Remote ON/OFF
Module ON < 1.8Vdc
Module OFF > 3.5Vdc or Open Circuit

CASE HB

All Dimensions In Inches(mm)
Tolerance Inches: x.xx= ±0.02, x.xxx= ±0.010
Millimeters: x.x= ±0.5, x.xx= ±0.25



All Specifications Typical At Nominal Line, Full Load and 25°C Unless Otherwise Noted.