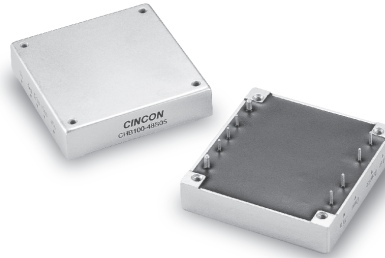


CHB100

S E R I E S

50-100 WATT 1/2 BRICK DC-DC CONVERTERS



Features

- 50-100W Isolated Output
- Half Brick Package
- Regulated Outputs
- Efficiency to 85%
- 500KHz Switching Frequency
- Five-Sided Shield Metal Case
- Continuous Short Circuit Protection

MODEL NUMBER	INPUT VOLTAGE	OUTPUT VOLTAGE	OUTPUT CURRENT	INPUT CURRENT		% EFF.	SIZE
				NO LOAD	FULL LOAD		
CHB100-24S25	18-36 VDC	2.5 VDC	20A	50 mA	2705 mA	77	Half-Brick
CHB100-24S33		3.3 VDC	20A		3480 mA	79	
CHB100-24S05		5 VDC	20A		5020 mA	83	
CHB100-24S12		12 VDC	8.3A		4880 mA	85	
CHB100-24S15		15 VDC	6.7A		4925 mA	85	
CHB100-24S24		24 VDC	4.17A		4905 mA	85	
CHB100-48S25	36-75 VDC	2.5 VDC	20A	50 mA	1335 mA	78	Half-Brick
CHB100-48S33		3.3 VDC	20A		1720 mA	80	
CHB100-48S05		5 VDC	20A		2480 mA	84	
CHB100-48S12		12 VDC	8.3A		2442 mA	85	
CHB100-48S15		15 VDC	6.7A		2463 mA	85	
CHB100-48S24		24 VDC	4.17A		2463 mA	85	

NOTE: 1. Nominal Input Voltage 24 or 48 VDC

Specifications

INPUT SPECIFICATIONS:

Input Voltage Range.....	24V.....	18-36V
	48V.....	36-75V
Undervoltage lockout	24Vin power up.....	17V
	power down	16V
	48Vin power up.....	34V
	power down	32.5V
Positive Logic Remote ON/OFF ^{3,4}		
Input Filter		PI Type

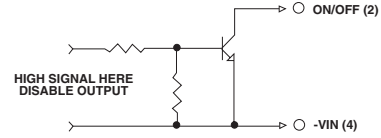
OUTPUT SPECIFICATIONS:

Voltage Accuracy :	±1% max.
Transient Response :25% Step Load Change.....	<500µ sec.
External Trim Adj. Range	±10%
Ripple & Noise, 20MHz BW, 2.5V & 3.3V & 5V.....	40mV RMS., max.
	100mV pk-pk, max.
12V & 15V.....	60mV RMS., max.
	150mV pk-pk, max.
24V.....	100mV RMS., max.
	240mV pk-pk, max.
Temperature Coefficient.....	±0.03%/°C
Short Circuit Protection.....	Continuous
Line Regulation ¹	±0.2% max.
Load Regulation ²	±0.2% max.
Over Voltage Protection trip Range, % Vo nom.....	115-140%
Current Limit	110% ~140% Nominal Output

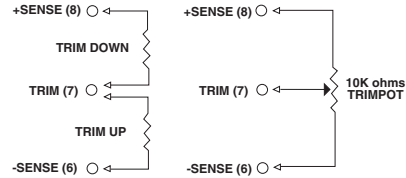
GENERAL SPECIFICATIONS:

Efficiency.....	See Table
Isolation Voltage	Input/Output..... 1500VDC min.
	Input/Case..... 1500VDC min.
	Output/Case..... 1500VDC min.
Isolation Resistance	10 ⁹ ohm min.
Switching Frequency	500KHz, Typ.
Operating Case Temperature	-40°C to 100°C
Storage Temperature	-40°C to +105°C
Thermal Shutdown, Case Temp.	100°C Typ.
Dimensions	2.28x2.40x0.50 inches
	(57.9x61.0x12.7 mm)
Case Material.....	Aluminum
Weight.....	95g

Remote On/Off Control



External Output Trim



PIN CONNECTION

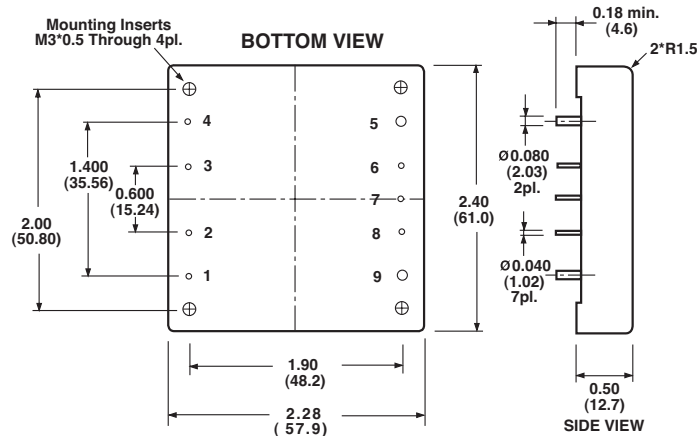
Pin	Function
1	+V Input
2	ON/OFF
3	CASE
4	-V Input
5	-V Output
6	-Sense
7	Trim
8	+Sense
9	+Vout

NOTE:

1. Measured From High Line to Low Line.
2. Measured From Full Load to Zero Load.
3. Logic Compatibility Open Collector ref. to -Input.
Module ON Open Circuit
Module OFF..... <0.8Vdc
4. Suffix "N" to the Model Number with Negative Logic Remote ON/OFF.

CASE HB

All Dimensions In Inches(mm)
Tolerance Inches: x.xx= ±0.02, x.xxx= ±0.010
Millimeters: x.x= ±0.5, x.xx= ±0.25



All Specifications Typical At Nominal Line, Full Load and 25°C Unless Otherwise Noted.